

Anti-H_HLA-G1 mIgG2a Antibody

Product information

GM-38392AB-10	10 µg
GM-38392AB-100	100 µg
GM-38392AB-1000	1 mg

Antibody Information

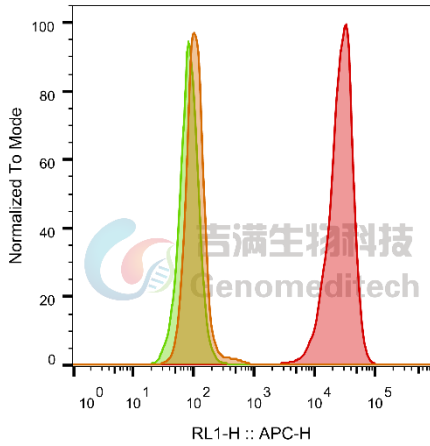
Species Reactivity	Human;
Clone	/
Source/Isotype	Monoclonal mouse IgG2a, κ
Application	Flow cytometry; Activation assay
Specificity	Detects HLA-G1
Gene	HLA-G1
Other Names	MHC-G
Gene ID	3135 (human);
Background	HLA-G belongs to the HLA class I heavy chain paralogues. This class I molecule is a heterodimer consisting of a heavy chain and a light chain (beta-2 microglobulin). The heavy chain is anchored in the membrane. HLA-G is expressed on fetal derived placental cells. The heavy chain is approximately 45 kDa and its gene contains 8 exons. Exon one encodes the leader peptide, exons 2 and 3 encode the alpha1 and alpha2 domain, which both bind the peptide, exon 4 encodes the alpha3 domain, exon 5 encodes the transmembrane region, and exon 6 encodes the cytoplasmic tail.
Storage	Store at 2-8°C short term (1-2 weeks).Store at ≤ -20°C long term. Avoid repeated freeze-thaw.
Formulation	Phosphate-buffered solution, pH 7.2.
Endotoxin	< 1 EU/mg, determined by LAL gel clotting assay

Version:3.2

Data Examples

Flow cytometry

H_HLA-G1 SK-OV3 Cell Line (Catalog # GM-C16966) was stained with Anti-H_HLA-G1 mIgG2a Antibody (Catalog # GM-38392AB) or isotype control antibody, followed by anti-Human IgG APC-conjugated Secondary Antibody.



SampleID	Geometric Mean : RL1-H
SK-OV-3 anti-H_HLA-G1+APC-2nd Ab	109
SK-OV-3 H_HLA-G1 M_IgG+APC-2nd Ab	84.1
SK-OV-3 H_HLA-G1 anti-H_HLA-G1+APC-2nd Ab	25372

Fig. FACS

Activation assay

Anti-H_HLA-G1 mIgG2a Antibody (Catalog # GM-38392AB) act to inhibit the association of the H_ILRB1(ILT2) Reporter Jurkat Cell Line (Catalog # GM-C15867) and H_HLA-G1 OKT3 CHO-K1 Cell Line (Catalog # GM-C16834). EC50 for this effect is 2.939 $\mu\text{g/mL}$.

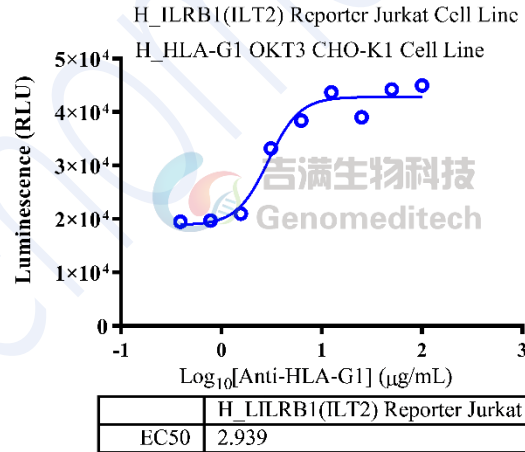


Fig. assay